

SLC25A37 Antibody (C-term)
Affinity Purified Rabbit Polyclonal Antibody (Pab)
Catalog # AP9715b**Specification**

SLC25A37 Antibody (C-term) - Product Information

Application	IF, WB, FC, IHC-P,E
Primary Accession	Q9NYZ2
Reactivity	Human, Rat
Host	Rabbit
Clonality	Polyclonal
Isotype	Rabbit IgG
Calculated MW	37323
Antigen Region	309-338

SLC25A37 Antibody (C-term) - Additional Information**Gene ID** 51312**Other Names**

Mitoferrin-1, Mitochondrial iron transporter 1, Mitochondrial solute carrier protein, Solute carrier family 25 member 37, SLC25A37, MFRN, MSCP

Target/Specificity

This SLC25A37 antibody is generated from rabbits immunized with a KLH conjugated synthetic peptide between 309-338 amino acids from the C-terminal region of human SLC25A37.

Dilution

IF~~1:25

WB~~1:1000

FC~~1:10~50

IHC-P~~1:10~50

E~~Use at an assay dependent concentration.

Format

Purified polyclonal antibody supplied in PBS with 0.09% (W/V) sodium azide. This antibody is purified through a protein A column, followed by peptide affinity purification.

Storage

Maintain refrigerated at 2-8°C for up to 2 weeks. For long term storage store at -20°C in small aliquots to prevent freeze-thaw cycles.

Precautions

SLC25A37 Antibody (C-term) is for research use only and not for use in diagnostic or therapeutic procedures.

SLC25A37 Antibody (C-term) - Protein Information

Name SLC25A37

Synonyms MFRN, MSCP

Function Mitochondrial iron transporter that specifically mediates iron uptake in developing erythroid cells, thereby playing an essential role in heme biosynthesis.

Cellular Location

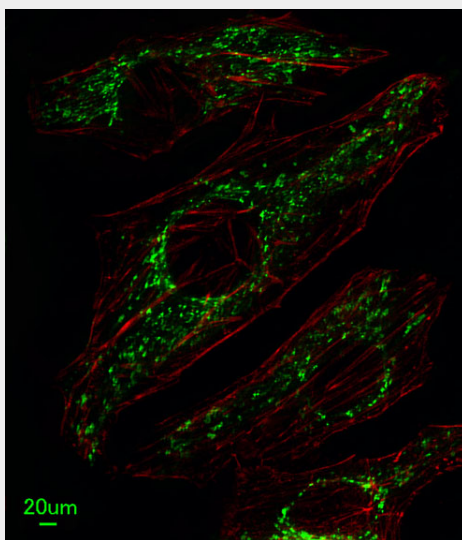
Mitochondrion inner membrane {ECO:0000250|UniProtKB:Q287T7}; Multi-pass membrane protein

SLC25A37 Antibody (C-term) - Protocols

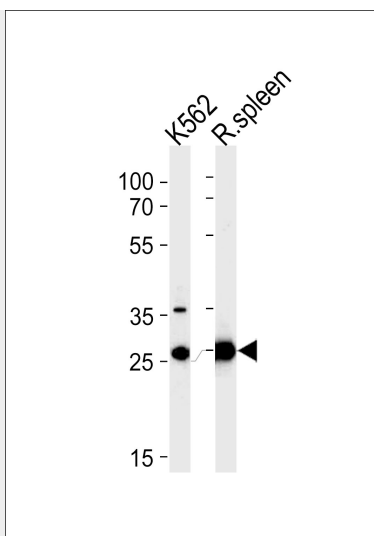
Provided below are standard protocols that you may find useful for product applications.

- [Western Blot](#)
- [Blocking Peptides](#)
- [Dot Blot](#)
- [Immunohistochemistry](#)
- [Immunofluorescence](#)
- [Immunoprecipitation](#)
- [Flow Cytometry](#)
- [Cell Culture](#)

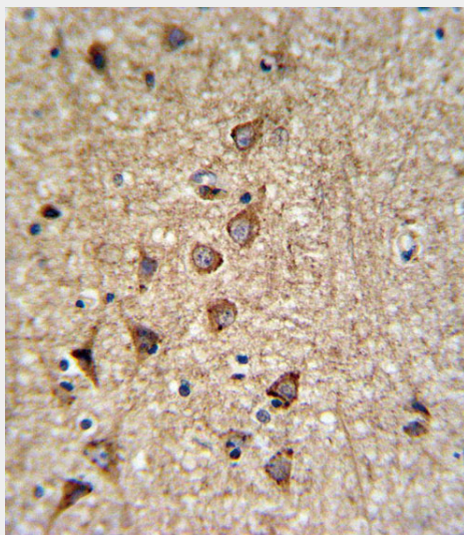
SLC25A37 Antibody (C-term) - Images



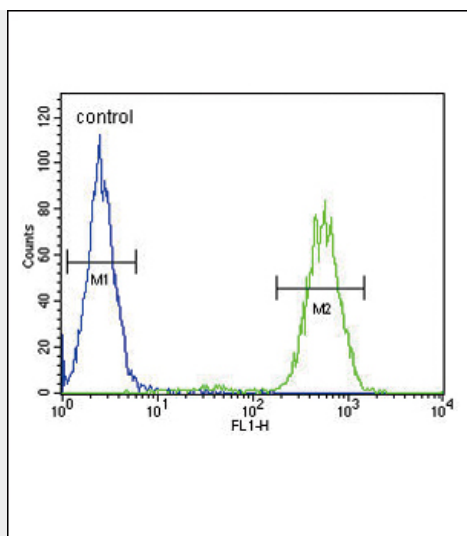
Immunofluorescent analysis of HeLa cells, using SLC25A37 Antibody (C-term) (Cat. #AP9715b). AP9715b was diluted at 1:25 dilution. Alexa Fluor 488-conjugated goat anti-rabbit IgG at 1:400 dilution was used as the secondary antibody (green). Cytoplasmic actin was counterstained with Dylight Fluor® 554 (red) conjugated Phalloidin (red).



SLC25A37 Antibody (C-term) (Cat. #AP9715b) western blot analysis in K562 cell line and rat spleen tissue lysates (35ug/lane). This demonstrates the SLC25A37 antibody detected the SLC25A37 protein (arrow).



SLC25A37 Antibody (C-term) (Cat. #AP9715b) IHC analysis in formalin fixed and paraffin embedded brain tissue followed by peroxidase conjugation of the secondary antibody and DAB staining. This data demonstrates the use of the SLC25A37 Antibody (C-term) for immunohistochemistry. Clinical relevance has not been evaluated.



SLC25A37 Antibody (C-term) (Cat. #AP9715b) flow cytometric analysis of MDA-MB231 cells (right histogram) compared to a negative control cell (left histogram). FITC-conjugated goat-anti-rabbit secondary antibodies were used for the analysis.

SLC25A37 Antibody (C-term) - Background

SLC25A37 belongs to the SLC25 family of mitochondrial carrier proteins (Haitina et al., 2006 [PubMed 16949250]). [supplied by OMIM].

SLC25A37 Antibody (C-term) - References

Kaneko, K., et al. FEBS J. 276(5):1370-1382(2009) Haitina, T., et al. Genomics 88(6):779-790(2006)
Shaw, G.C., et al. Nature 440(7080):96-100(2006) Li, Q.Z., et al. Mamm. Genome 12(11):830-836(2001)